



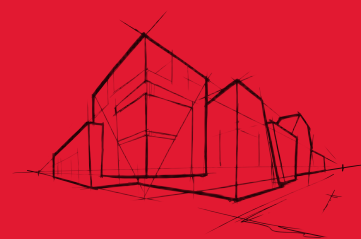
ROCKWOOL Safe 'n' Silent Pro

Fire, Thermal and Acoustic Insulation for
Interior Partition Walls and Ceilings

ROCKWOOL Safe 'n' Silent Pro is a range of stone wool insulation used for interior applications where superior thermal and acoustical performances as well as fire resistance are required.

It has excellent acoustical dampening properties and provides an easy friction fit into walls and ceilings. It is also non-combustible – it also does not develop toxic smoke nor promote flame spread, even when directly exposed to fire. The superior performances of ROCKWOOL Safe 'n' Silent Pro ensure the comfort and safety of the inhabitants of the interior space.

The product is available in a wide range of sizes to suit most interior application requirements in Australia and New Zealand.



Superior Acoustic Properties

Enhance with unique fiber structure to absorb sound and reduces noise traveling from one room to another, improving occupant comfort.

For more information contact www.outright.co.nz

ROCKWOOL

Safe 'n' Silent Pro

Technical Data Sheet
Interior Partition & Ceiling Insulation
1st November 2023

Technical Parameters

Product	ROCKWOOL Safe 'n' Silent Pro330	ROCKWOOL Safe 'n' Silent Pro350	ROCKWOOL Safe 'n' Silent Pro370	ROCKWOOL Safe 'n' Silent Pro380	Test Standard
Reaction to Fire	Non-combustible Euroclass A1	Non-combustible Euroclass A1	Non-combustible Euroclass A1	Non-combustible Euroclass A1	AS 1530.1 EN 13501-1
Fire Hazard Properties	Ignitibility: 0 Spread of flame: 0 Heat evolved: 0 Smoke developed: 0-1	Ignitibility: 0 Spread of flame: 0 Heat evolved: 0 Smoke developed: 0-1	Ignitibility: 0 Spread of flame: 0 Heat evolved: 0 Smoke developed: 0-1	Ignitibility: 0 Spread of flame: 0 Heat evolved: 0 Smoke developed: 0-1	AS 1530.3
Melting Point	1000°C	1000°C	1000°C	1000°C	ASTM E794
Thermal Conductivity at mean 15°C	0.035 W/mK	0.034 W/mK	0.033 W/mK	0.033 W/mK	ASTM C518
Water Absorption (partial immersion)	1 kg/m²	0.5 kg/m²	0.5 kg/m²	0.5 kg/m²	BS EN ISO 29767
Water Vapor Absorption	Less than 0.04 Vol %	Less than 0.04 Vol %	Less than 0.04 Vol %	Less than 0.04 Vol %	ASTM C1104/ 1104M
Water Repellency	98 %	98%	98 %	98 %	GB/T 10299

Sound Absorption Coefficient (50mm Thickness)

Product	125Hz	250Hz	500Hz	1000Hz	2000Hz	4000Hz	NRC	α_w
Safe 'n' Silent Pro330	0.2	0.6	1.0	1.0	1.0	1.0	1.0	0.9
Safe 'n' Silent Pro350	0.2	0.7	1.0	1.0	1.0	1.0	1.0	1.0
Safe 'n' Silent Pro370	0.2	0.75	1.0	1.0	1.0	1.0	1.0	1.0
Safe 'n' Silent Pro380	0.2	0.85	1.0	1.0	1.0	1.0	1.0	1.0

Application

ROCKWOOL Safe 'n' Silent Pro is designed and manufactured to achieve excellent acoustic insulation performance in all types of drywall partition configurations. It is recommended to be used for drywall partition applications in hospitals, cinemas, schools, offices, residential and industrial buildings.

Compliance with the New Zealand Building Code

ROCKWOOL stone wool products when used, installed and maintained in accordance with the requirements outlined in this datasheet, will meet or contribute to meeting the following provisions of the NZBC:

- Clause B2 DURABILITY: Performance B2.3.1 (a) not less than 50 years and B2.3.1 (b) 15 years.**
Where the building is maintained so that provisions of the NZBC E2 and E3 Clauses are met, and where the insulation is not crushed or exposed to conditions that will diminish its thermal performance, ROCKWOOL Stone Wool Insulation can expect to have a serviceable life of at least 50 years. Refer to Installation Guideline and Product Handling and Storage Guideline for more information.
- Clause E3 INTERNAL MOISTURE: Performance E3.3.1.**
ROCKWOOL Stone Wool Insulation contributes to meeting this requirement.
- Clause F2 HAZARDOUS BUILDING MATERIALS: Performance F2.3.1.**
ROCKWOOL Stone Wool Insulation is safe when handled.
- Clause H1 ENERGY EFFICIENCY: Performance H1.3.1 (a) and H1.3.2 E.**
ROCKWOOL Stone Wool Insulation will contribute to meeting the requirements of NZBC Clause H1, Performance H1.3.1 (a) and H1.3.2 E by complying with NZBC Verification Methods H1/VM1, H1/VM2, NZBC Acceptable Solutions H1/AS1, or H1/AS2.

For more information contact www.outright.co.nz

ROCKWOOL Safe 'n' Silent Pro

Technical Data Sheet
Interior Partition & Ceiling Insulation
1st November 2023

Facings

ROCKWOOL Safe 'n' Silent series is available as plain products and additionally with options of foil facing or glass tissue on one side or two-sided.

Packaging and Storage

ROCKWOOL Safe 'n' Silent is shrink-wrapped in polyethylene sheets for ease of handling, transportation and storage. Products should be stored in doors or under waterproof covering.

Health & Safety

ROCKWOOL stone wool products are manufactured from FBS-1 stone wool. FBS-1 stone wool is safe to use and the fibre component of these products is listed by Safe Work Australia as Man-made Vitreous Fibre (stone wool) of low bio persistence as specified under Note Q in the Australian Hazardous Substances Information System and in the Australian Approved Criteria.

Product Specification

ROCKWOOL Safe 'n' Silent Pro330

R-Value m ² K/W	Thickness (mm)	Width (mm)	Length (mm)	# Pieces per pack	Area per pack (m ²)
0.70	25	600	1200	12	8.64
1.45	50	600	1200	8	5.76
1.85	64	600	1200	5	3.60
2.15	75	600	1200	4	2.88
2.55	90	600	1200	4	2.88
2.85	100	600	1200	3	2.16

ROCKWOOL Safe 'n' Silent Pro350

R-Value m ² K/W	Thickness (mm)	Width (mm)	Length (mm)	# Pieces per pack	Area per pack (m ²)
0.75	25	600	1200	12	8.64
1.45	50	600	1200	6	4.32
1.90	64	600	1200	5	3.60
2.20	75	600	1200	4	2.88
2.65	90	600	1200	4	2.88
2.95	100	600	1200	3	2.16

ROCKWOOL Safe 'n' Silent Pro370

R-Value m ² K/W	Thickness (mm)	Width (mm)	Length (mm)	# Pieces per pack	Area per pack (m ²)
0.75	25	600	1200	12	8.64
1.50	50	600	1200	6	4.32
1.95	64	600	1200	5	3.60
2.25	75	600	1200	4	2.88
2.75	90	600	1200	4	2.88
3.05	100	600	1200	3	2.16

ROCKWOOL Safe 'n' Silent Pro380

R-Value m ² K/W	Thickness (mm)	Width (mm)	Length (mm)	# Pieces per pack	Area per pack (m ²)
0.75	25	600	1200	12	8.64
1.50	50	600	1200	6	4.32
1.95	64	600	1200	5	3.60
2.25	75	600	1200	4	2.88
2.75	90	600	1200	4	2.88
3.05	100	600	1200	3	2.16



North Island Phone: 027 449 6750
60D Leon Leicester Ave, Mt Wellington, Auckland
South Island Phone: 027 250 6832
106 Wigram Road, Wigram, Christchurch



Disclaimer: The information contained in this data sheet is only applicable for New Zealand and is believed to be correct at the date of publication and is subject to change after the date of printing. This data sheet was designed for general information purpose only. It's contents should not be construed as representing all performance for these insulation materials. You should not act or reply on any of the information contained herein without seeking professional advice. We make no representations as to accuracy, completeness, correctness, suitability or validity of any information in this document and will not be liable for any errors, omissions, or delays in this information or any losses, injuries or damages arising from it use. All information is provided on a as-is basis.

For more information contact www.outright.co.nz

ROCKWOOL Malaysia Sdn. Bhd.

710 347 NZ-11/23 V1 (EN)